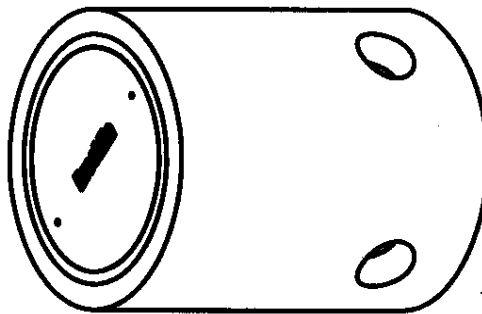
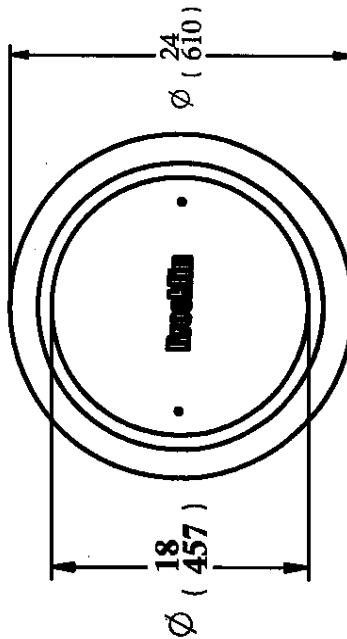
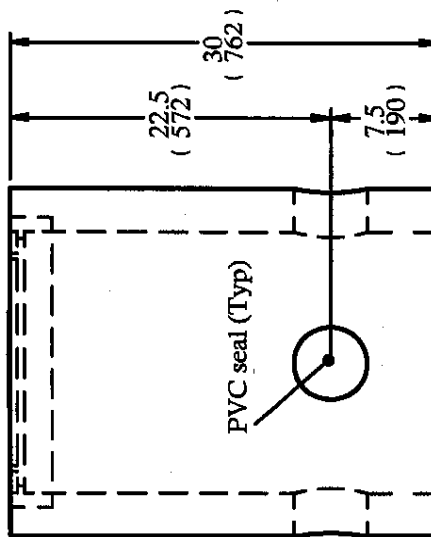
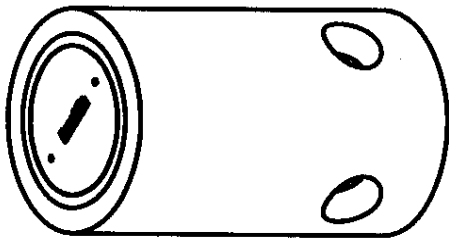
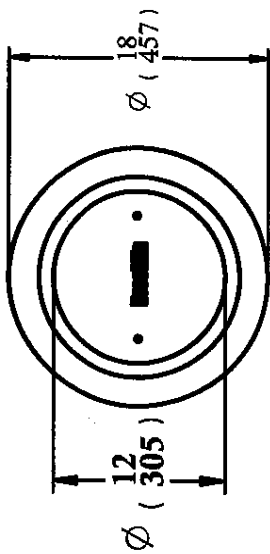
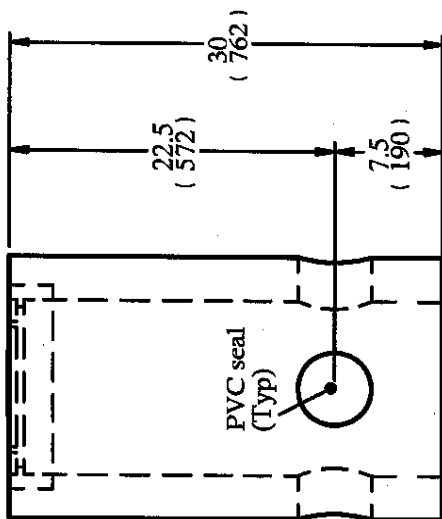


2112.01



2112.02

in (mm)

Brooklin

CONCRETE

Brooklin (800)655-3430
 Newmarket (888)407-6443
 Huntsville (800)264-3302
 Haliburton (800)273-9084

CONSTRUCTION SPECIFICATIONS

Concrete Properties: 4500 PSI (32 MPa) Min Strength
 6-8% Air Entrainment

Cable entry openings - PVC seals for max 4" I.D. duct
 Refer to O.P.S.D. 2112.01 & 2112.02
 Weight (12" I.D.) - 350lbs / 160 kg
 Weight (18" I.D.) - 500 lbs / 230 kg

BCP 2112 SERIES

PRECAST CONCRETE
 ELECTRICAL HANDHOLES

DRAWN BY: RM

DATE: Jan/2006